

Community Planting Day 2024

Volunteer Information Pack

Help us plant 4,000 seedlings at Telford Park for a better, greener future.

Bring the family and help us improve habitat linkages in the Moorabool Shire. You will be joining other volunteers to plant 4,000 seedlings and make up and install tree guards to protect the seedlings.

Where: Telford Park, 88 Wittick Street, Darley

Time: 9.30 am - 4.00 pm, Sunday 21st July

What to bring: warm clothes, hat, gardening gloves and sturdy footwear.

To minimise waste, please bring your own water bottle (filling stations will be available), cup, plate and cutlery for lunch. If you would like a hot drink in the morning, please try one of the great cafes in Bacchus Marsh or bring a thermos. Hot drinks will be served at lunch time and afternoon tea.

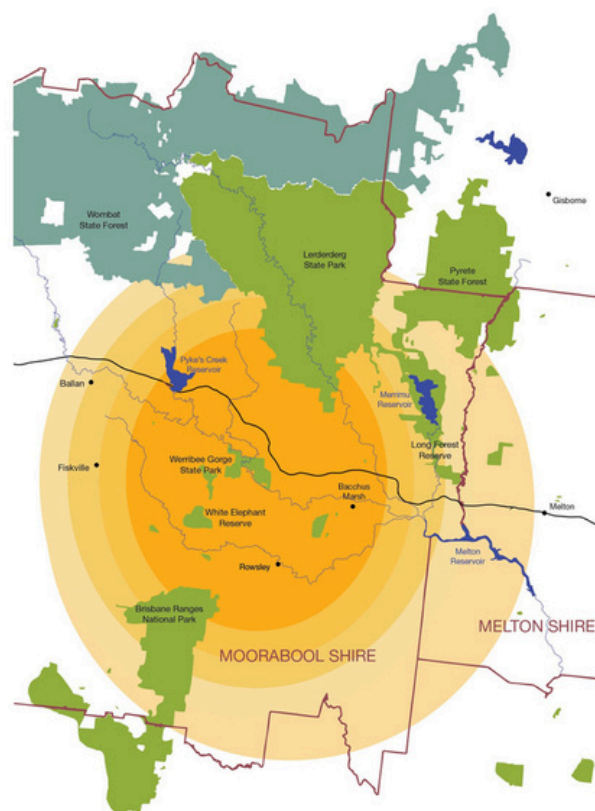
Catering: morning tea will be provided at the planting sites. Lunch and afternoon tea will be provided by the Bacchus Marsh Lions Club.

Parking: Parking onsite at 88 Wittick Street. Follow the signs and parking attendants.

Arrival: please check in at the registration desk and get allocated to your team.

Contact: For more information, contact Lindy: 0460 878 586 servicepartnerships@melbournewater.com.au

Supporters of the event



Event schedule	
9.30am	Registration
9.30 – 11am	Volunteers allocated into teams and planting
11am	Morning tea
11.15 – 12.30pm	Continue planting
12.30 – 1.30pm	BBQ lunch
1pm	Welcome to Country Speeches and group photo
1.30 – 3.30pm	Continue planting
3.30 – 4pm	Afternoon tea/event closed

Planting site



The annual planting day is one of Grow West's biggest events and is an important opportunity to rejuvenate and restore local landscapes.

This year, Grow West is excited to be partnering with Moorabool Shire Council to revisit and improve Telford Park, Darley on Wurundjeri Country. Moorabool Shire Council are one of Grow West's longest running partners and so it is wonderful to be running this planting day with them. Grow West held a community planting day on this site in 2017 to improve native vegetation and decrease erosion impacts. It is a wonderful opportunity to work with council to further improve this site. This year's planting day will focus on undertaking in-fill planting and providing good mid story habitat for birds and insects. This planting day will provide necessary habitat linkages in the landscape, with the Lerderderg River and other patches of vegetation nearby.

This site would have originally sat within an Ecological Vegetation Class called Grassy Woodland of the Central Victorian Uplands. This is now an extremely altered site that will greatly benefit from returning it to native vegetation.

This year, two thirds of the guards we will use are ones that have been reclaimed from previous planting sites. This is a wonderful initiative by the Moorabool Landcare Network and Grow West is very happy to be reusing a resource for this planting day.

Grow West has worked with thousands of volunteers and hundreds of landholders over the past 20 years to plant over 1.4 million seedlings in Melbourne's west.

Grow West's vision is to rejuvenate 10,000 hectares of land by connecting the Brisbane Ranges National Park, Werribee Gorge State Park and Lerderderg State Park through a mosaic of restoration works on private and public property.

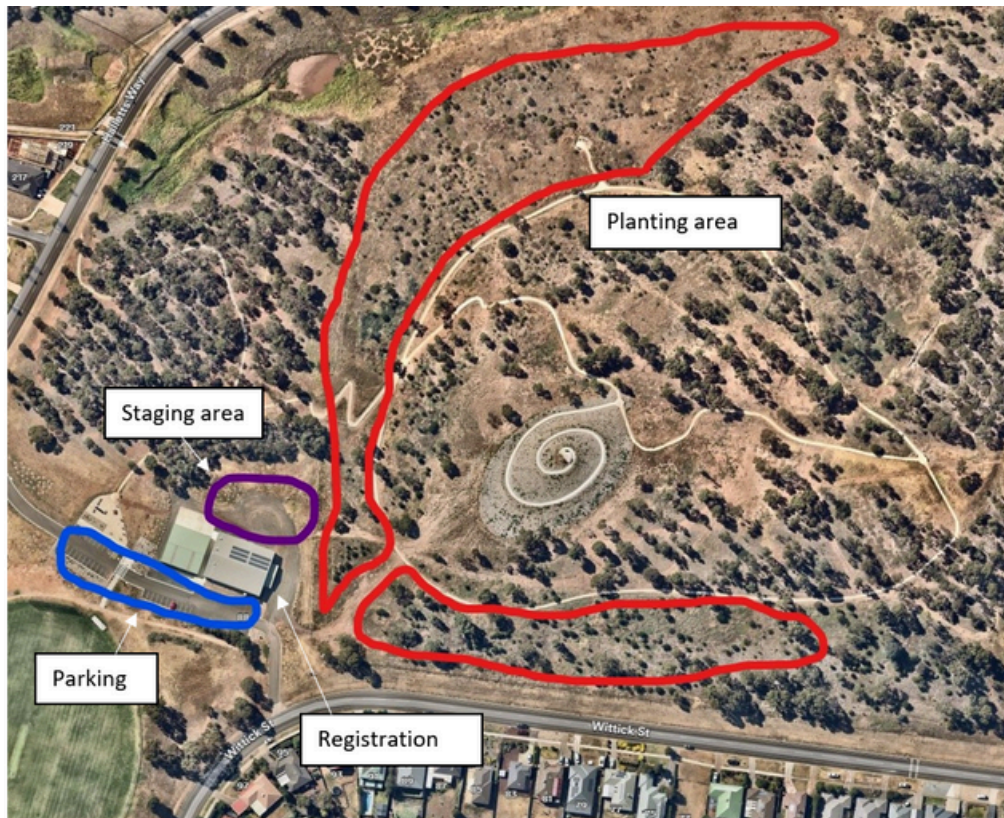
Grow West's partners are fundamental to the program's success, with government organisations, landholders, community groups and businesses all working together to achieve on-ground results.

Site Snapshot

- Telford park, Darley
- EVC - originally would have been Grassy Woodland
- 4,000 indigenous seedlings
- 30 different species to be planted
- Bioregion - Central Victorian Uplands
- 18th Grow West Planting Event

This event is run in partnership with Melbourne Water, Moorabool Shire Council, Moorabool Landcare Network, Friends of Werribee Gorge and Long Forest Mallee, Victorian National Park Association, Bacchus Marsh Lions Club, Victorian Mobile Landcare Group.

Planting Day Site Map



Frequently Asked Questions

When is the planting day?

Sunday 21st July 2024, from 9.30 am to 4.00 pm.

How do I register?

Registration online at Humanitix:

<https://events.humanitix.com/gw-planting-day-2024>

How will the day be organised?

Volunteers will be allocated to a small team of about 20 people who will work together under the guidance of a team leader. The team leader will demonstrate the method of planting to be used on this site.

What will I be doing?

We are helping to revegetate to provide habitat connectivity and enhance vegetation cover. You may be asked to help with tasks such as: delivering and laying out of plants and tree guards in your nominated planting zone; assembling tree guards; planting in holes; installing tree guards; quality control inspections; watering; and gathering of tools, spare plants and tree guards at the end of your planting session.

What should I bring / wear?

Please bring along a raincoat, warm clothing, hat, clean and sturdy footwear. It would be helpful to bring along gardening gloves. Make sure you clearly label your personal items.

Do I, along with family or friends, need to register and inform if I need to cancel?

Every person who attends the planting day needs to be registered. Registration makes it possible for the organising committee to plan for catering, allocating number of volunteers to teams and organising tools and plants for the day.

To cancel your attendance, simply hop online and cancel your online booking or let the Event Coordinator know via email. Your cancellation may make it possible for someone else to attend.

Is the project environmentally friendly?

Planting trees couldn't be any more environmentally responsible. We also ask you to bring your own water bottle, thermos, and coffee/mugs to save on using throwaways.

What about meals on the day?

Please indicate any dietary requirements when registering. To minimise waste, please bring your own water bottle, thermos and mug/coffee cup. We will be providing morning and afternoon tea and lunch.

Can children attend the day?

School aged children are most welcome to participate, however any person under the age of 18 is the responsibility of adults they attend with and should be supervised at all times. It is also important that children are supervised for their safety. During planting, supervision ensures that the right planting technique is undertaken for optimum plant survival.

How fit do I need to be?

A reasonable level of fitness will be necessary for you to be involved in the planting activities. Tasks may include carrying plants, and planting seedlings. Jobs are allocated depending on an understanding of your fitness or physical capabilities. There are also important jobs that don't require much walking or physical activity, such as making up tree guards.

What about my safety?

A thorough safety audit is prepared for the day. There will also be qualified first aid support at all times. All participants will also need to practice due care and take responsibility for their own safety. Don't forget to bring adequate sun protection, sturdy footwear and warm clothing.

Will there be public liability insurance cover?

Yes, the organising committee arranges normal public liability insurance for the day.

What will the weather be like?

Being winter and the nature of the site, it is likely to be cold and may be windy. We advise that you come prepared for all weather conditions, but highly recommend you bring along warm clothing. Visit www.bom.gov.au for more information about the weather forecast for the area.

Am I allowed to bring my dog to the planting day?

For the comfort and safety of all participants, only service dogs are permitted at the planting day.

Lost property?

On occasions, personal items of clothing, drink bottles or planting equipment are left behind after the planting day. We will endeavour to return property but please ensure that you clearly identify all your personal items.

Who do I contact if I need answers to information not covered above?

Lindy | E: servicepartnerships@melbournewater.com.au; P: 0460 878 586