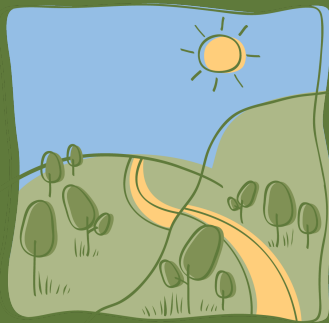


G R O W



W E S T

2022-23 SNAPSHOT

Image: Grow West community planting day, Hopetoun Park, 2023

www.growwest.com.au

Landscape rehabilitation on a grand scale

Since 2004, Grow West has worked to improve degraded landscapes around Bacchus Marsh, in Melbourne's west. Its vision is to rejuvenate up to 10,000 hectares and develop vegetation connections across landscapes between the Brisbane Ranges National Park, Werribee Gorge State Park and Lerderderg State Park.

Grow West works with a range of landholders on revegetation projects of all sizes. Over 2500 hectares in total has been revegetated, enhancing biodiversity, reducing the spread of noxious weeds and pest animals, reducing erosion and improving landholder skills and participation.

The success of the project is due to the strong collaboration between the organisations and community, including: Melbourne Water, Moorabool Shire Council, City of Melton, Southern Rural Water, Greater Western Water, Parks Victoria, Department of Energy, Environment and Climate Action and Moorabool Landcare Network.

Melbourne Water coordinates Grow West on behalf of these partner organisations.



Grow West community planting day, Hopetoun Park, 2022



1.8 hectares
revegetated



4,000 seedlings planted
2,000 seedlings for
landholder giveaways



Partner contribution of
\$15,000 to support the
coordination of
Grow West.



15 organisations
and groups
involved



2 landholders
engaged



160 volunteers.
5 events with 100
participants

Planting along the Werribee River, Hopetoun Park

Grow West was once again able to run its annual community planting day after having to cancel the two previous years due to Covid 19. Grow West partnered with Southern Rural Water to host its planting day at Pelican Point along the banks of the Werribee River, Hopetoun Park. 160 volunteers planted 3,700 seedlings. We planted right at the intersection of the Djerriwarrh Creek and the Werribee River as the Werribee flows into the Melton Reservoir. This site is known to be home to many threatened species such as the endangered Werribee Blue Box and Growling Grass Frog. Other iconic species such as Platypus and White-bellied Sea Eagles are regularly seen from the site. These species sit within an Ecological Vegetation Class called Plains Woodland/Plains Grassland Mosaic of the Victorian Volcanic Plain Bioregion. As a result, the conservation status of the vegetation community along this whole corridor is endangered, even though some of the species are referred to as common. Our work along the river here helps to improve the habitat value of this significant link through the landscape.



Growing Waterway Knowledge and Engagement in the West



This two-year project aims to increase community participation, stewardship and capacity, to value and take action to improve waterways through a series of workshops, events and training activities. This project has been running for a year now and has undertaken five community engagement events:

- Gardens for Wildlife - educational talks given by Gardens for Wildlife Bacchus Marsh and the Bacchus Marsh Platypus Alliance. 400 indigenous seedlings were given away.
- Dung beetle workshop - this workshop educated people about what dung beetles can do for our environment and how to have a dung beetle friendly property. We did a visit to a farm and identified beetles.
- iNaturalist - run in conjunction with Parks Victoria, this event taught participants how to use the app for themselves and how they can contribute to the body of science.
- Horse property management workshop - this workshop educated participants on how their property can be best set up to benefit the horses and the environment. There was a strong focus on protecting waterways.
- Primary school planting morning - run in conjunction with Moorabool Shire Council and Moorabool Landcare Network, this event educated students from the Bacchus Marsh Primary school about the importance of revegetation. They participated in the planting of 500 seedlings along the Lerderderg River.

Three Rivers Project

This project was set up to enhance habitat in the Upper Werribee and Moorabool Catchments, especially focusing on the Werribee River, Lerderderg River and Moorabool River. This project was completed by the end of December, 2022.

This project achieved the following outcomes:

- 2022 Grow West Community Planting Day
- Landholder plant give away of 2,000 seedlings to help revegetate the Grow West landscape.
- Moorabool Landcare Network Nursery upgrade to increase capacity.
- Integrated pest management on private land that adjoins Parks Victoria land

The Three Rivers project, came via Parks Victoria through funding from DELWP.



Looking Forward

2023-24 will focus on a revegetation project at the Ballan Wastewater Treatment Plant. This is an important site in the landscape, with the Werribee River marking the northern boundary. We will be planting along the eastern boundary fence of the property and along an escarpment of a creek that runs into the Werribee River at the site. These plantings will improve connectivity through the site, connecting habitat in the rail reserve at the south of the site to the escarpment planting in the north.

The Growing Waterway Knowledge and Engagement in the West project will continue with three more events being run.

To celebrate 20 years of Grow West in 2023, we will put 20,000 seedlings into the landscape through projects and plant giveaways.



For more information on Grow West:

Lindy MacRaid

Grow West Program Coordinator

Email: lindy.macraird@melbournewater.com.au

www.growwest.com.au

