

Community Planting Day 2023

Volunteer Information Pack

Help us plant 5,000 seedlings at Ballan Treatment Plant for a better, greener future.

Bring the family and help us improve habitat near the Werribee River. You will be joining other volunteers to plant 5,000 seedlings and make up and install tree guards to protect the seedlings.

Where: Ballan Treatment Plant, Ingliston Road, Ballan

Time: 9.30 am - 4.00 pm, Sunday 16th July

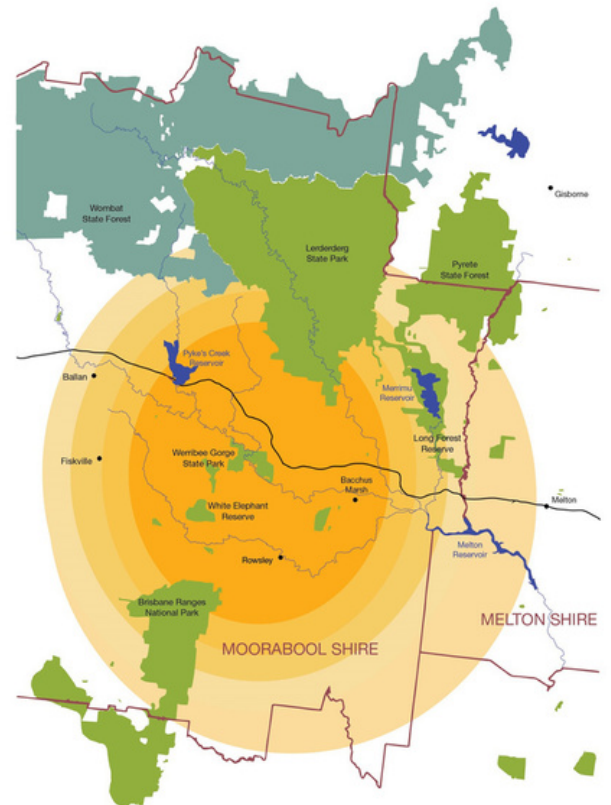
What to bring: warm clothes, hat, gardening gloves and clean sturdy footwear (shoe wash used upon entering planting site). To minimise waste, please bring your own water bottle (filling stations will be available), cup, plate and cutlery for lunch.

Catering: morning tea will be provided at the planting sites. Lunch and afternoon tea will be provided by the Bacchus Marsh Lions Club

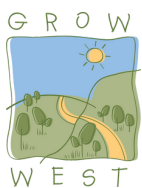
Parking: Opposite 478 Ingliston Road, Ingliston. Follow the signs and parking attendants.

Arrival: please check in at the registration desk and get allocated to your team.

Contact: For more information, contact Lindy: 0460 878 586 servicepartnerships@melbournewater.com.au



Supporters of the event



Event schedule

9.30am	Registration
9.30 – 11am	Volunteers allocated into teams and planting
11am	Morning tea
11.15 – 12.30pm	Continue planting
12.30 – 1.30pm	BBQ lunch
1pm	Welcome to Country Speeches and group photo
1.30 – 3.30pm	Continue planting
3.30 – 4pm	Afternoon tea/event closed

Escarpment planting site



The annual planting day is one of Grow West's biggest events and is an important opportunity to rejuvenate and restore local landscapes. We are very excited to be celebrating our 20th year of making a difference to habitat in this important landscape.

This year, Grow West is excited to be partnering with Central Highlands Water and holding the planting day at the Ballan Treatment Plant. Grow West is also excited to have the Wadawurrung Traditional Owners Aboriginal Corporation undertaking the site preparation for the planting. This is an important site in the landscape, with the Werribee River marking the northern boundary. We will be planting along the eastern boundary fence of the property and along an escarpment of a creek that runs into the Werribee River at the site. These plantings will improve connectivity through the site, connecting habitat in the rail reserve at the south of the site to the escarpment planting in the north.

The Name Werribee River comes from the local Aboriginal language as Weariby-yallock meaning backbone stream, and is important to the Wadawurrung and the Wurrundjeri Woi Wurrung people.

This site sits within an Ecological Vegetation Class called Plains Grassy Woodland of the Victorian Volcanic Plain Bioregion. As a result, the conservation status of the vegetation community along this whole corridor is endangered, even though some of the species are common. The iconic Platypus is regularly seen in this stretch of the river.

Our work in this area helps to improve the habitat value of this significant link through the landscape. This riparian corridor's name meaning backbone describes its function for the ecology as it creates a backbone of connectivity through our landscape for native species to move along and live within. This planting will link up with previous Grow West plantings and some new revegetation projects Grow West is running this planting season

Grow West has worked with thousands of volunteers and hundreds of landholders over the past 20 years to plant over 1.4 million trees in Melbourne's west.

Grow West's vision is to rejuvenate 10,000 hectares of land by connecting the Brisbane Ranges National Park, Werribee Gorge State Park and Lerderderg State Park through a mosaic of restoration works on private and public property.

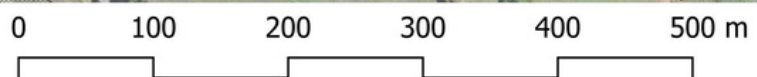
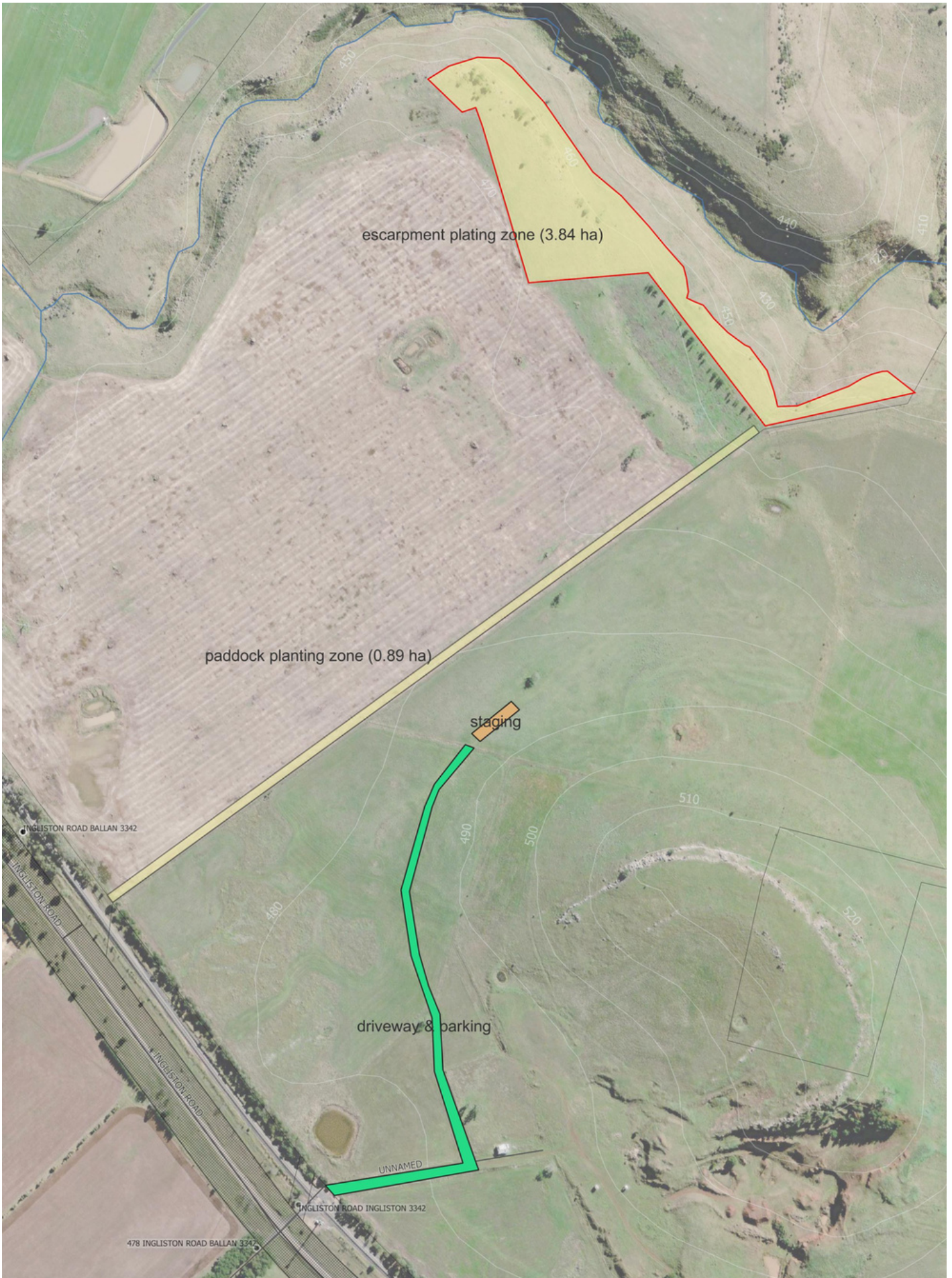
Grow West's partners are fundamental to the program's success, with government organisations, landholders, community groups and businesses all working together to achieve on-ground results.

Site Snapshot

- Ballan Treatment Plant - Werribee River
- EVC - Plains Grassy Woodland
- 5,000 indigenous seedlings
- 30 different species to be planted
- Bioregion - Victorian Volcanic Plain
- Bioregion conservation status - endangered
- 17th Grow West Planting Event

This event is run in partnership with Melbourne Water, Central Highlands Water, Wadawurrung Traditional Owners Aboriginal Corporation, Moorabool Landcare Network, Moorabool Shire Council, Friends of Werribee Gorge and Long Forest Mallee, Victorian National Park Association, Bacchus Marsh Lions Club, Victorian Mobile Landcare Group.

Planting Day Site Map



Frequently Asked Questions

When is the planting day?

Sunday 16th July 2023, from 9.30 am to 4.00 pm.

How do I register?

Registration online at Eventbrite:

<https://GrowWestPlantingDay.eventbrite.com>

How will the day be organised?

Volunteers will be allocated to a small team of about 20 people who will work together under the guidance of a team leader. The team leader will demonstrate the method of planting to be used on this site.

What will I be doing?

We are helping to revegetate within a working farm to provide habitat connectivity and enhancing vegetation cover. You may be asked to help with tasks such as, delivering and laying out of plants and tree guards in your nominated planting zone, assembling tree guards, planting in holes, installing tree guards, quality control inspections, and gathering of tools, spare plants and tree guards at the end of your planting session.

How can I help protect the farmland?

Because we are planting on a site within a working farm, it is important for participants to follow the allocated tracks, stay within the planting zone and adhere to 'washing' requirements (tyres and footwear) to reduce risks to the farming operation.

What should I bring / wear?

Please bring along a raincoat, warm clothing, hat, clean and sturdy footwear. It would be helpful to bring along gardening gloves. Make sure you clearly label your personal items.

Do I, along with family or friends, need to register and inform if I need to cancel?

Every person who attends the planting day needs to be registered in order to cover public liability insurance requirements. Registration makes it possible for the organising committee to plan for catering, allocating number of volunteers to teams and organising tools and plants for the day.

To cancel your attendance, simply hop online and cancel your online booking or let the Event Coordinator know via email. Your cancellation may make it possible for someone else to attend.

Is the project environmentally friendly?

Planting trees couldn't be any more environmentally responsible. We also ask you to bring your own water bottle, thermos, and coffee/mugs to save on using throwaways.

Can children attend the day?

School aged children are most welcome to participate, however any person under the age of 18 is the responsibility of adults they attend with and should be supervised at all times. It is also important that children are supervised for their safety and during planting, to ensure that the right planting technique is undertaken for optimum plant survival.

What about meals on the day?

Please indicate any dietary requirements when registering. To minimise waste, please bring your own water bottle, thermos and mug/coffee cup. We will be providing morning and afternoon tea and lunch.

How fit do I need to be?

A reasonable level of fitness will be necessary for you to be involved in the planting activities. Tasks may include carrying plants, and planting trees. Jobs are allocated depending on an understanding of your fitness or physical capabilities. There are also important jobs that don't require much walking or physical activity, such as making up tree guards.

What about my safety?

A thorough safety audit is prepared for the day. There will also be qualified first aid support at all times. All participants will also need to practice due care and take responsibility for their own safety. Don't forget to bring adequate sun protection, sturdy footwear and warm clothing.

Will there be public liability insurance cover?

Yes, the organising committee arranges normal public liability insurance for the day.

What will the weather be like?

Being winter and the nature of the site, it is likely to be cold and may be windy. We advise that you come prepared for all weather conditions, but highly recommend you bring along warm clothing. Visit www.bom.gov.au for more information about the weather forecast for the area.

Am I allowed to bring my dog to the planting day?

For the comfort and safety of all participants, only service dogs are permitted at the planting day.

Lost property?

On occasions, personal items of clothing, drink bottles or planting equipment are left behind after the planting day. We will endeavour to return property but please ensure that you clearly identify all your personal items.

Who do I contact if I need answers to information not covered above?

Lindy | E: servicepartnerships@melbournewater.com.au; P: 0460 878 586