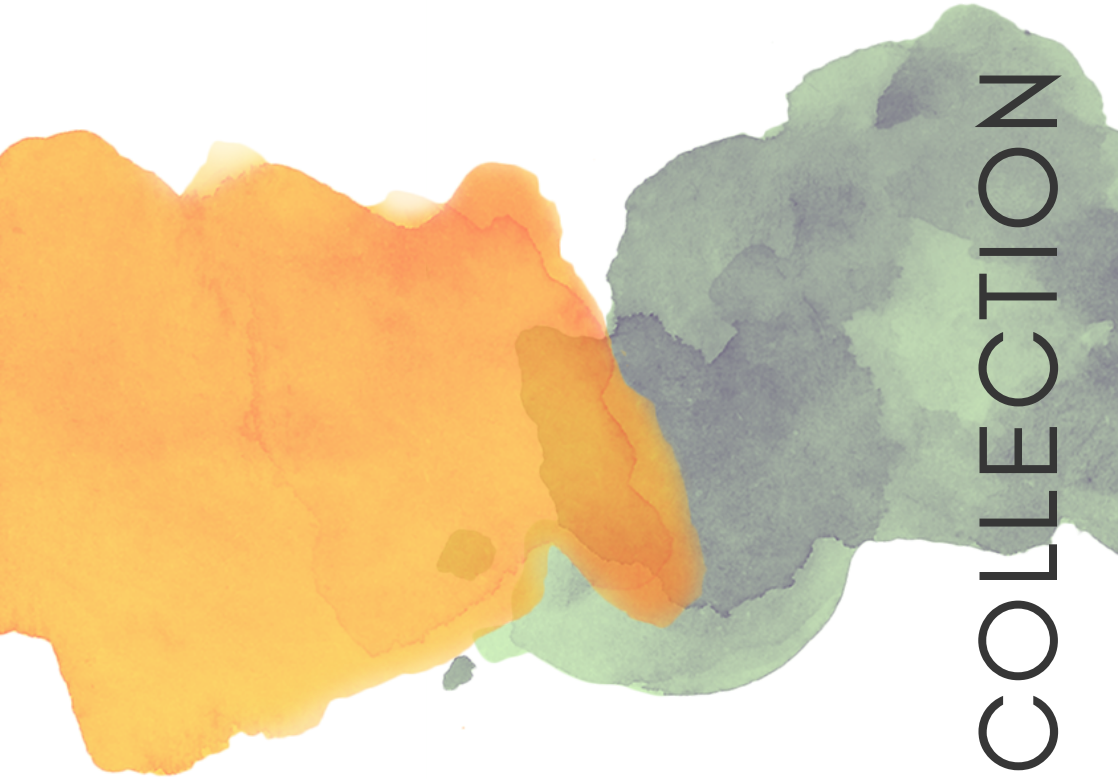


GROW WEST

LANDSCAPE CHANGE PROJECT



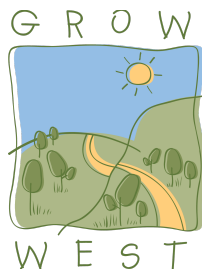
ART COLLECTION

2005 to 2019

GROWWEST.COM.AU

GROW WEST

LANDSCAPE CHANGE PROJECT



2005 to 2019 Art Collection

- 2019** Winner: Artist: Alison Durham, Blue Bird, Mixed Media
Size: width 730mm x height 500mm Prize - \$500
- 2018** Winner: Artist: Bernie McRitchie, Owls, Photograph
Size: width 760mm x height 630mm Prize - \$500
- 2017** Winner: Artist: Dennis Cotter, Werribee Gorge, Watercolour
Size: width 470mm x height 600mm Prize - \$500
- 2016** Winner: Artist: Ri Van Veen, Sunset over the Brisbane Ranges, Pottery
Size: height 240mm x width 250mm depth 250mm 3D piece Prize - \$500
- 2015** Winner: Artist: Alison Durham, Weed shirts, Mixed Medium
Size: width 810mm x height 660mm Prize - \$500
- 2014** Winner - Artist: Peter Chaloner, The Trees Return, Photograph
Size: width 740mm x height 570mm Prize - \$400
- 2013** Winner - Artist: Peter Chaloner, Tree Time, Photograph
Size: width 730mm x height 580mm Prize - \$400
- 2012** Winner - Artist: Brian Nash, Rowsley Valley near Bacchus Marsh, Oil
Size: width 1100mm x height 860mm Prize - \$1,000
- 2011** Winner - Artist: Colin Palethorpe, Parwan Hillside, Oil
Size: width 780mm x height 520mm Prize - \$1,000
- 2010** Winner - Artist: Geoff Paynter, Revegetation at the Racecourse Reserve, Acrylic
Size: width 103mm x height 530mm Prize - \$1,000
- 2009** Winner - Artist: Sue Stewart, Bald Hill & Swans Road Revegetation beneath Musk Fire Plume, Oil on hessian
Size: width 940mm x height 700mm Prize - \$1,000
- 2008** Winner - Artist: Geoff Paynter, Tramway Lane to Bald Hill, Watercolour
Size: width 970mm x height 790mm Prize - \$1,000
- 2007** Winner - Artist: Janice Webster, The Bluff Rowsley, Watercolour
Size: width 1030mm x height 695mm Prize - \$1,000
- 2006** Winner - Artist: Jon Crawley, Landcare Action, Watercolour
Size: width 770mm x height 1000mm Prize - \$1,000
- 2005** Winner - Artist: Janice Webster, Pentland Hills Revegetation, Pastel
Size: width 950mm x height 750mm Prize - \$1,000

Grow West

Grow West is an ambitious program of landscape restoration in the west of Melbourne, working with local communities for a sustainable future.

Grow West's vision is 'Working together to create productive and healthy landscapes in the West'. The program's target is to rejuvenate 10,000 hectares of the upper Werribee Catchment, west of Melbourne by connecting large areas of public reserves; You Yangs Regional Park, Brisbane Ranges National Park, Werribee Gorge State Park, Wombat State Forest and the Lerderderg State Park, through a mosaic of restoration works on private property.

Grow West is truly a collaborative project where local communities work together with all levels of government, businesses, and organisations to achieve the best outcome for the region in the most effective and sustainable way.

The success of the project is due to the strong collaboration between the organisations and community.





Grow West

Art Collection 2005-19

Since 2005, Grow West have sponsored the Rotary Club of Bacchus Marsh Art Sale and Exhibition, through the Grow West Landscape Art Prize. Each year, artists of all levels are invited to enter artwork in any medium that expresses their understanding and appreciation of the work done to protect the precious, yet fragile, environment in the Grow West area. Through this sponsorship, the project has acquired 15 pieces of artwork, depicting the Grow West landscape.



2019 Winner

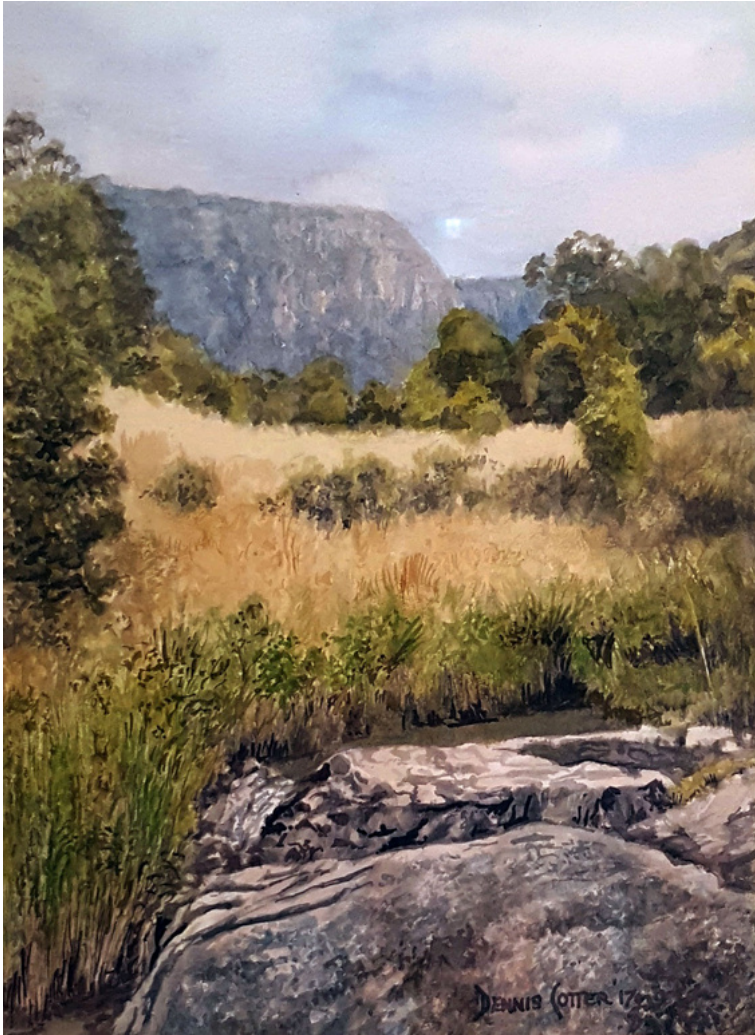
Artist: Alison Durham
 Medium: Mixed Media
 Title: Blue Bird



2018 Winner

Artist: Bernie McRitchie
 Medium: Photograph
 Title: Owls
 View: Photo taken in Bacchus Marsh

2017 Winner

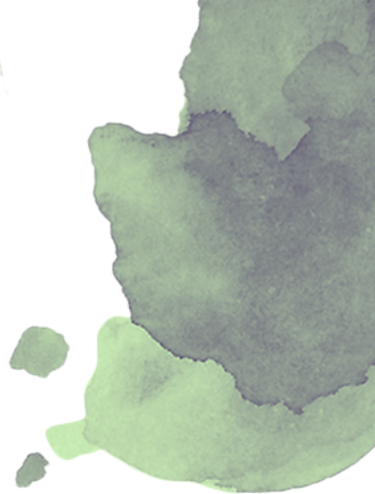


Artist: Dennis Cotter

Medium: Watercolour

Title: Werribee Gorge

View: Werribee Gorge State Park, Pentland Hills



2016 Winner

Artist: Ri Van Veen

Medium: Pottery

Title: Sunset over the Brisbane Ranges

2015 Winner

Artist: Alison Durham

Medium: Mixed

Title: Weed shirts



2014 Winner



Artist: Peter Chaloner

Medium: Photograph

Title: The Trees Return

View: Taken from 138 Myers Rd, Pentland Hills looking
at W James Whyte Island Reserve

2013 Winner



Artist: Peter Chaloner

Medium: Photograph

Title: Tree Time

View: Taken from 138 Myers Rd, Pentland Hills looking
at W James Whyte Island Reserve

2012 Winner



Artist: Brian Nash

Medium: Oil

Title: Rowsley Valley near Bacchus Marsh

View: Cut Hill, Rowsley, looking east

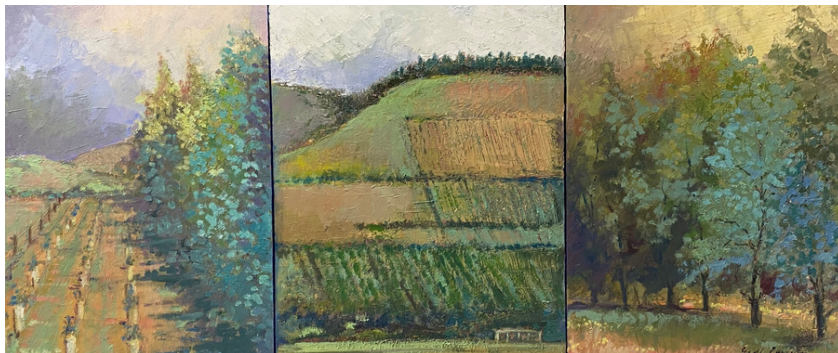
2011 Winner



Artist: Colin Palethorpe

Medium: Oil

Title: Parwan Hillside



2010 Winner

Artist: Geoff Paynter

Medium: Acrylic

Title: Revegetation at the Racecourse Reserve

View: Bacchus Marsh Racecourse



2009 Winner

Artist: Sue Stewart

Medium: Oil on hessian

Title: Bald Hill and Swans Road Revegetation
beneath Musk Fire Plume

View: Pentland Hills

2008 Winner



Artist: Geoff Paynter

Medium: Watercolour

Title: Tramway Lane to Bald Hill

View: Tramway Lane to Bald Hill, Bacchus Marsh

2007 Winner



Artist: Janice Webster

Medium: Watercolour

Title: The Bluff Rowsley

View: A view showing revegetation on the slopes
of 'The Bluff' in Glenmore Road Rowsley.



2006 Winner

Artist: Jon Crawley

Medium: Water colour

Title: Landcare Action



2005 Winner

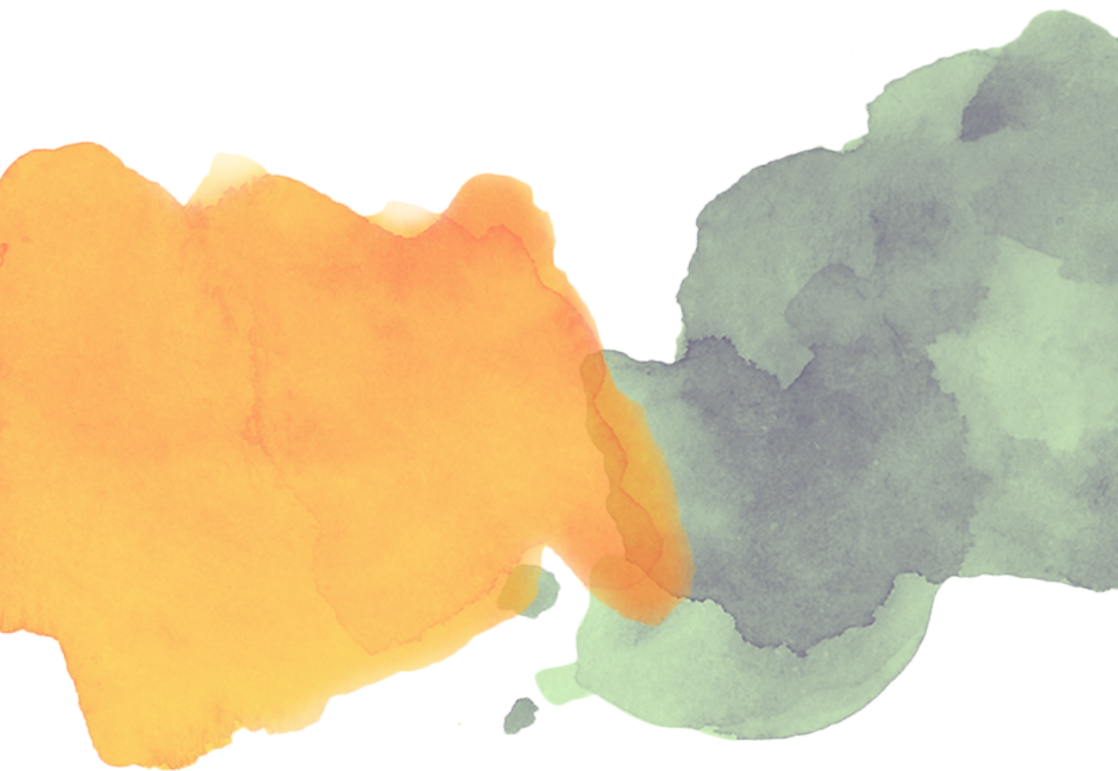
Artist: Janice Webster

Medium: Pastel

Title: Pentland Hills Revegetation

View: Tramway Lane looking south





For more information about the project visit
www.growwest.com.au

