

Project Snapshot 2021

Kel Shields Flora Reserve Restoration Project

About Grow West

Grow West is an ambitious landscape restoration program that works with local communities in the west of Melbourne to create a sustainable future.

Grow West's vision is to rejuvenate 10,000 hectares of land by connecting the Brisbane Ranges National Park, Werribee Gorge State Park and Lerderderg State Park through a mosaic of restoration works on private and public property. For more information visit www.growwest.com.au

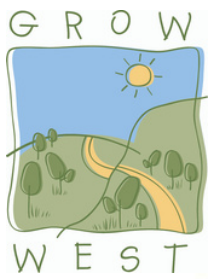
Annual Grow West Community Planting Day

Over the past 16 years, the Grow West Program has held an annual community planting day within the Grow West Area. Annually this event attracts over 200 people from all over Melbourne and the local area. This event is hosted by Grow West's partner organisations including Port Phillip and Westernport Catchment Management Authority, Moorabool Shire Council, Southern Rural Water, Melbourne Water, Parks Victoria, Department of Environment, Land, Water and Planning, and Moorabool Landcare Network, as well as being supported by Victorian National Park Association, Friends of Werribee Gorge and Long Forest Mallee, Bacchus Marsh Lions Club and Victorian Mobile Landcare Group.

Unfortunately, due to coronavirus (COVID-19) restrictions, the 2021 event was cancelled, however, with the generous support from our sponsors we were able to plant 4,000 indigenous plants in early August by contractors.



Staff and contractors planting this year's 4,000 plants



Kel Shields Flora Reserve Restoration Project

Kel Shields Flora Reserve

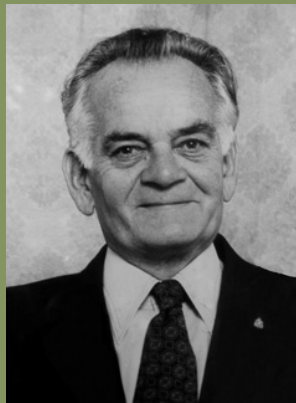
This year's planting day site is located at Kel Shields Flora Reserve in Bacchus Marsh, a five-hectare reserve that forms an important urban biolink, connecting the escarpment with the Werribee River that runs through town.

The reserve supports a diverse understory of native grasses and shrubs and would benefit from the revegetation of native canopy trees to improve the biodiversity of the area. Early this year two Working for Victoria Crews, employed by the Port Phillip and Westernport CMA and one council crew helped remove a large volume of Boxthorns and Prickly Pear from the site with council following up with the removal of a number of large peppercorn trees.

It is envisaged that the reserve will become an important thoroughfare for the community, with walking tracks connecting new suburbs of Bacchus Marsh to the train station and main street.

The reserve was named after Bacchus Marsh community member and former Shire President, the late Kelvin Shields. Kelvin (Kel) was born in Bacchus Marsh in September 1923 and was elected to the Bacchus Marsh Shire Council in 1967, serving until his passing in 1989. In addition to his role on the Shire Council, Kel was an active member of the Bacchus Marsh Conservation and Planning Association and other local organisations including the Bacchus Marsh and District Historical Society and the Bacchus Marsh Football Club.

Kel Shields



With the generous support from our sponsors and a small band of volunteers, along side our planting contractor team, we were able to plant the 4,000 plants in early August.

There were 43 different species planted along with four different tree guards. These will be monitored to see how they perform over the next 12 months.



2021 sponsors

