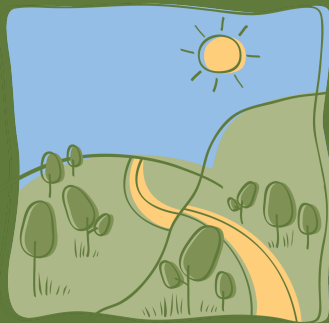


G R O W



W E S T

# 2020-21 SNAPSHOT

Image: Aerial view of the Grow West Balliang Creek Revegetation Project in 2020 Courtesy of Moorabool Landcare Network, Roger MacRaid

[www.growwest.com.au](http://www.growwest.com.au)

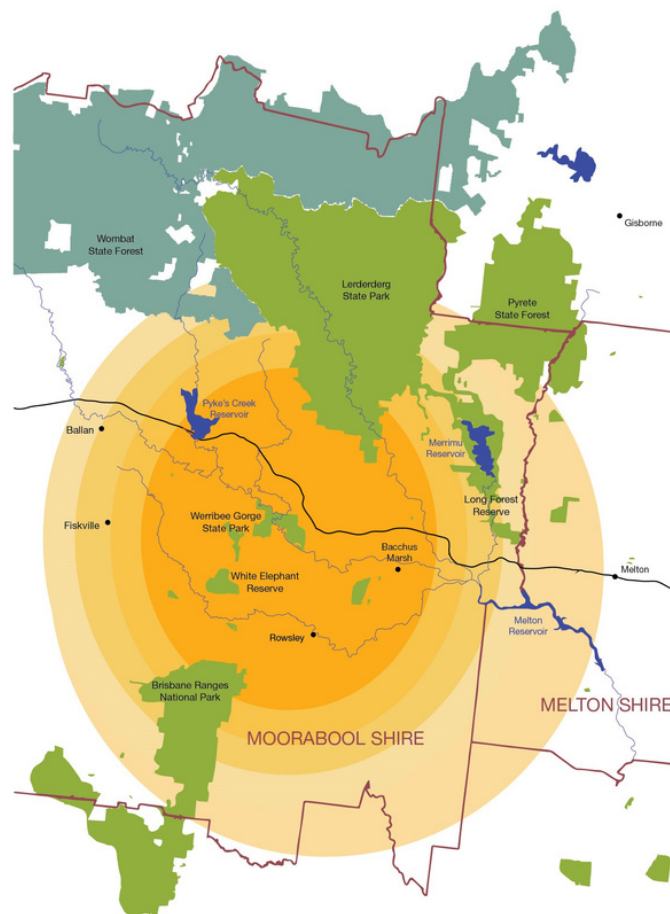


# Landscape rehabilitation on a grand scale

Since 2003, Grow West has worked to improve degraded landscapes around Bacchus Marsh, in Melbourne's west. Its vision is to rejuvenate up to 10,000 hectares and develop vegetation connections across landscapes between the Brisbane Ranges National Park, Werribee Gorge State Park and Lerderderg State Park.

Grow West works with a range of landholders on revegetation projects of all sizes. Over 2,500 hectares in total has been revegetated, enhancing biodiversity, reducing the spread of noxious weeds and pest animals, reducing erosion and improving landholder skills and participation.

The success of the project is due to the strong collaboration between the organisations and community, including: Port Phillip & Westernport CMA, Moorabool Shire Council, Melbourne Water, Southern Rural Water, Parks Victoria, Department of the Environment, Land, Water and Planning, Moorabool Landcare Network, and landholder representatives.



## Achievements in 2020-21



131.55 hectares  
revegetated



17,675 trees plants  
17kg direct seeding



Partner contribution of  
\$50,000 to support the  
coordination of  
Grow West.



15 organisations  
and groups  
involved



2 landholders  
engaged



0 volunteers due  
to COVID-19

# Achievements in 2020-21

## Balliang Creek Restoration Project

Over the past 15 years, Grow West has hosted an annual community planting day in July, attracting over 200 people from all over Melbourne and the local area as well a host of sponsors. Unfortunately, due to coronavirus (COVID-19), the 2020 event was cancelled. However, with the generous support from sponsors 6,300 indigenous plants were still able to be planted along the Balliang Creek.

This year's Grow West community revegetation site was located on the Wilson's property in Balliang. Grow West's Environmental Projects Coordinator, Helena Lindorff worked with the Wilson Family and Melbourne Water Assessor, Lloyd Stanway, in developing a project plan and executing the works along 2.3 kilometres of Balliang Creek, covering an area of 13.8 hectares.

The project will provide a crucial habitat corridor for native birds across the landscape and add an important piece to the vision of Grow West – rejuvenating 10,000 hectares of land by connecting the Brisbane Ranges National Park, Werribee Gorge State Park and Lerderderg State Park through a mosaic of restoration works on private and public property.

The Balliang Creek Restoration Project would not be possible support from our Grow West sponsors - Melbourne Water's Stream Frontage Program, ANZ Seeds for Renewal Program, Bacchus Marsh Community Bank, Bacchus Marsh Lions Club and the Australian Government's Communities Environment Program.



The Wilson Family  
Three generations on the farm

## Photographic Exhibition ONLINE

### Grow West: A Greener, Brighter Future

The 2020 Grow West Biodiversity Photographic Exhibition went online due to COVID-19. It celebrated the beauty and wonder of the local environment, showcasing an amazing array of animals and plants of the upper Werribee Catchment.

The collection featured photographs by three talented local photographers; David Whelan, Bernie McRitchie, and Chris Lindorff, who have been taking photos for many years of the flora and fauna in the local area. Their love of nature is shown through the lens of a camera and how they capture the beauty and wonder of the natural environment in all its splendor.

The exhibition coincided with Biodiversity Month. Held in September each year, it aims to promote the importance of protecting, conserving and improving biodiversity both within Australia and across the world.

A big thank you goes out to Moorabool Shire Council and the team at the Lerderderg Library for making this happen.



© David Whelan / Wildpix

Dusky Woodswallows  
Photographer David Whelan



# Looking forward

2021-22 will focus on the implementation of a revegetation project on Kel Shields Flora Reserve in Maddingley, a five-hectare reserve that forms an important urban biolink, connecting the escarpment with the Werribee River that runs through town.

The reserve supports a diverse understory of native grasses and shrubs and would benefit from the revegetation of native canopy trees to improve the biodiversity of the area. A program of intensive weed control of Prickly Pear, Peppercorns, Bridal Creeper and Serrated Tussock will be undertaken prior to planting 4,000 indigenous plants with the community.

It is envisaged that the reserve will become an important thoroughfare for the community, with walking tracks connecting new suburbs of Bacchus Marsh to the train station and main street



**For more information on Grow West:**

Helena Lindorff

Grow West Program Coordinator

Phone: 03 9971 6502 | Email: [helena.lindorff@ppwcma.vic.gov.au](mailto:helena.lindorff@ppwcma.vic.gov.au)

[www.growwest.com.au](http://www.growwest.com.au)

