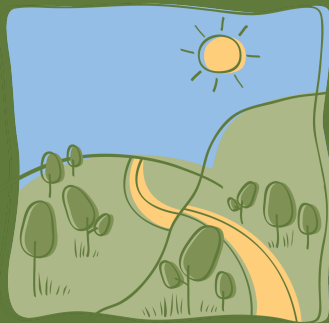


G R O W



W E S T

2019-20 SNAPSHOT

Long Forest Conservation Nature Reserve

www.growwest.com.au

Landscape rehabilitation on a grand scale

Since 2003, Grow West has worked to improve degraded landscapes around Bacchus Marsh, in Melbourne's west. Its vision is to rejuvenate up to 10,000 hectares and develop vegetation connections across landscapes between the Brisbane Ranges National Park, Werribee Gorge State Park and Lerderderg State Park.

Grow West works with a range of landholders on revegetation projects of all sizes. Over 2,500 hectares in total has been revegetated, enhancing biodiversity, reducing the spread of noxious weeds and pest animals, reducing erosion and improving landholder skills and participation.

The success of the program is due to the strong collaboration between the organisations and community, including: Port Phillip & Westernport Catchment Management Authority, Moorabool Shire Council, Melbourne Water, Southern Rural Water, Parks Victoria, Department of the Environment, Land, Water and Planning, Conservation Volunteers Australia, Moorabool Landcare Network, and landholder representatives.



Achievements in 2019-20



216.60 hectares
revegetated



23,210 trees plants
148.62kg direct seeding



Partner contribution of
\$50,000 to support the
coordination of
Grow West.



19 organiations
and groups
involved



17 landholders
engaged



300 volunteers

Protecting and Connecting Species in Melbourne's West.

This four-year project aims to protect and enhance threatened plants and animals in the Upper Werribee Catchment by undertaking large scale pest plant and animal control programs. Effort is concentrated within the four large public reserves - Lerderderg State Park, Werribee Gorge State Park, Long Forest Nature Conservation Reserve and Brisbane Ranges National Park - and adjoining private properties, covering an area of approximately 30,000 hectares.

The large-scale pest plant and animal threat mitigation activities undertaken in the four reserves provided a large boost to the works that had previously been carried out by groups and landholders to protect and enhance threatened species and communities.

The project targeted pest animals and pest weed species which pose a threat to native species listed under the Flora and Fauna Guarantee Act 1988 including the Swift Parrot, Brush-tail Phascogale, Growling Grass Frog, Diamond Firetail, Bacchus Marsh Wattle, Clover Glycine and Velvet Daisy Bush.

The project has achieved great on-ground environmental outcomes through a collaborative multi-stakeholder approach. By working together, both private and public land managers have had a positive and lasting impact on the landscape with the support of organisations such as the Port Phillip and Westernport CMA, Parks Victoria, Department of the Environment, Land, Water and Planning, Friends of Brisbane Ranges Wurundjeri Woi-wurrung, and Trust for Nature.

4 Year Project Outputs



Lerderderg State Park

Areas treated
34,600 ha goat control
21,628 ha cat control
42,248 ha pig control



Brisbane Ranges National Park

Areas treated
3,666 ha Gorse
5,180 ha Sallow Wattle
22,086 ha Deer control
28,309 ha Goat control
14,971 ha Cat control
1,970 ha African Weed Orchid surveyed



Werribee Gorge State Park

Areas treated
858 ha Serrated Tussock
1,281 ha rabbits



Long Forest Conservation Nature Reserve

Areas treated
1,278 ha Serrated Tussock



Landholder Engagement

34 properties assessed
1,651 ha assessed
19 species of weeds observed



Grow West: A Greener Brighter Future

Photographic Exhibition

A photographic exhibition on display at the Lerderberg Library in September 2019, showcased the biodiversity of the region and the positive impact of community environmental action.

Grow West: A Greener, Brighter Future celebrates 17 years of the Grow West program, which has worked with 48 landholders and 1,400 volunteers to undertake one of Victoria's largest revegetation projects.

The exhibition featured a wonderful array of local native animals taken by local photographers David Whelan and Bernie McRitchie. It also included a number of fascinating before and after photos, which show how the landscape has improved between the 1970s and today, taken by Roger McRaid.



Looking Forward

2020-21 will focus on the implementation of a waterway revegetation project in the Balliang area and the completion of a large landscape restoration project in the Rowsley Valley with the support of Australian Government - Communities for Environment Program, ANZ Seeds for Renewal, Bacchus Marsh Community Bank, Melbourne Water - Stream Frontage Program, Bacchus Marsh Lions Club and Grow West partners.



For more information on Grow West:

Helena Lindorff

Grow West Program Coordinator

Phone: 03 9971 6502 | Email: helena.lindorff@ppwcma.vic.gov.au

www.growwest.com.au

