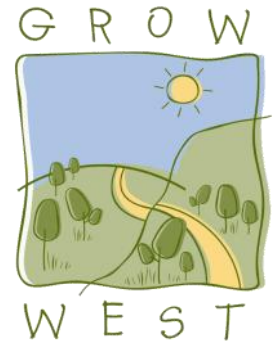


Volunteer Information Pack

**Grow West Community Planting Day
Sunday 21st July 2019**



When: Sunday 21st July 2019, 9:30am – 4pm

What: You will join a volunteer force to plant seedlings, make up and install tree guards and then join us for lunch.

Where: 155 Falcon's Track Ingliston, VIC 3342 (Vic Roads Page 77 G4). For further details and site location map, visit www.growwest.com.au

Bring: Warm clothes, hat, gloves and sturdy footwear. To minimize waste, please bring your own water bottle, cup, plate and cutlery for lunch. Lunch & afternoon tea will be supplied.

Contact: Helena Lindorff ph: 9971 6502/ 0437 195 511 / Helena.lindorff@ppwcma.vic.gov.au

Register online at www.growwest.com.au. Closes 14th July 2019

This annual event is run in partnership with Port Phillip and Westernport CMA - Grow West Project, Victorian National Park Association, Friends of Werribee Gorge and Long Forest Mallee, Bacchus Marsh Lions Club, Victorian Mobile Landcare Group, Bacchus Marsh Community Bank, Melbourne Water Stream Frontage Program and hosted by Rick and Nadia Stockman and Airlie Morris and Bill Bunnage

The event has been funded through the Greening the West – 1 Million Tree program which is supported by the Australian Government's 20 Million Trees Programme (part of the National Landcare Program).

**Help us plant 4,000 trees
for a better, greener
future.**

Event Schedule

9.30am	Registrations Open
9.30–11 am	Volunteers allocated into teams Tree Planting
11am	Morning tea supplied at planting zone
11.15am – 12.30pm	Continue planting
12.30 - 1.30pm	BBQ lunch
1pm	Official welcome & thank you / Large group photo
1.30pm – 3.45pm	Assemble back into planting teams – continue planting
3.45pm–4pm	Afternoon tea back at catering tent / conclusion of event

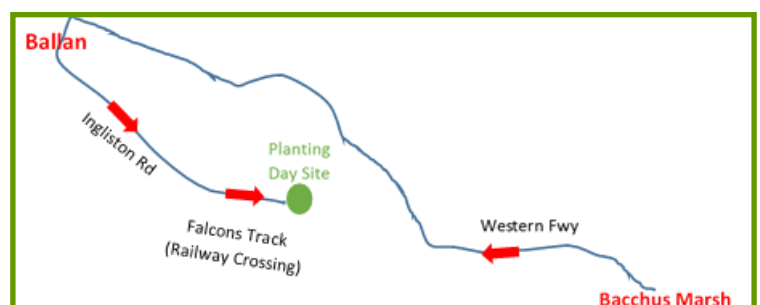
Directions to planting day site

155 Falcon's Track, Ingliston VIC 3342 (Vic Roads Page 77 G4).

1. **Head onto the Western Freeway**
2. Take the **Ballan Exit** off the freeway
3. Turn left into **Ingliston Rd**
4. Cross the train line and veer left and continue along **Ingliston Rd** for approx. 7.2km
5. Turn left onto **Falcons Track** continue for approx. 1.5km.
6. Parking as directed.

Please refer to the Melway / VicRoads / Google Maps if you wish to take an alternate route.

Site Map



Planting Day Sites - Ingliston



Green thumbs are invited to roll up their sleeves and help plant 4000 native plants in Melbourne’s west at the 14th annual Grow West Community Planting Day on Sunday 21st July.

The annual planting day is one of the Grow West’s biggest events and is an important opportunity to rejuvenate and restore local landscapes. Over the past 15 years, Grow West has worked with thousands of volunteers and hundreds of landholders, who have helped plant over a million trees in Melbourne’s west.

This year, the planting day will be held at two adjoining properties in Ingliston, totalling 123 hectares. The properties adjoin W. James Whyte Island Reserve (The Island) and are only a stone’s throw from the Werribee Gorge State Park.

Property owners, Rick and Nadia and Bill and Airlie, both purchased the properties five years ago and have a clear vision for restoring the landscape.

Bill and Airlie said, “We wish to create a forested habitat for half of the property and improve the pasture on the other half using regenerative agriculture for the other half all with the intention of radically improving our soil carbon levels.”

Rick and Nadia said, “We love the rugged landscape, native birdlife, views for miles and remote feeling... we’d love to leave it in a better state than when we purchased.”

Grow West Coordinator, Helena Lindorff, is excited to be teaming up with Melbourne Water, Friends of Werribee Gorge and Long Forest Mallee, Victorian National Parks Association,

Victorian Mobile Landcare Group, Bacchus Marsh Lions Club, 15 Trees, GJ Gardener Homes, Bendigo Bank Bacchus Marsh and others for the event.

“It’s very exciting to run our annual community planting day at a location that will directly benefit the Werribee Gorge State Park through nature corridors that will be established on private properties.

“It is an ambitious project and by participating in the 2019 planting day you’ll be helping to reform this important nature corridor for threatened wildlife such as the Swift Parrot and Brush-tailed Phascogale.

“With a bit of work from dedicated volunteers, this park has the potential to be a significant community asset and improve the health of the local environment and community.”

The event has been funded through the Greening the West - 1 Million Tree program, which is part of the Australian Government’s National Landcare Program, and Melbourne Water’s Stream Frontage Program. The project creates a unique opportunity to make substantial, wide ranging improvements to the liveability and sustainability of the west.

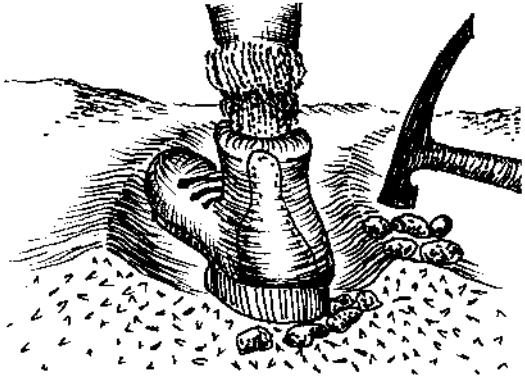
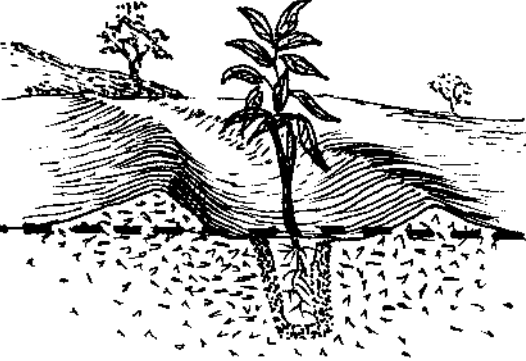
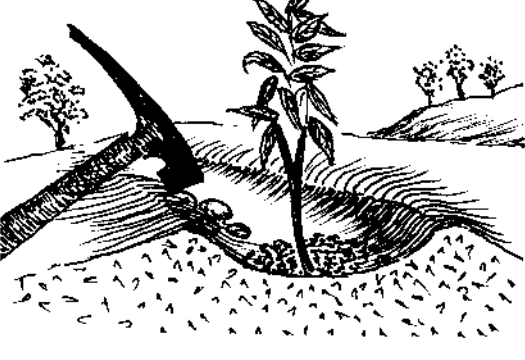
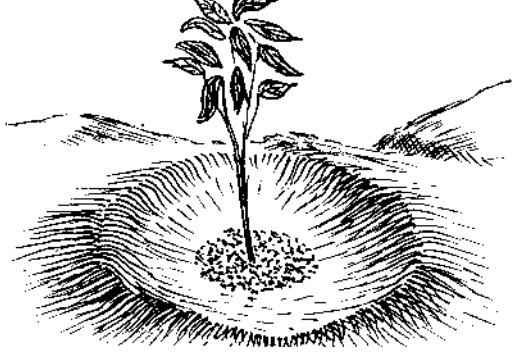
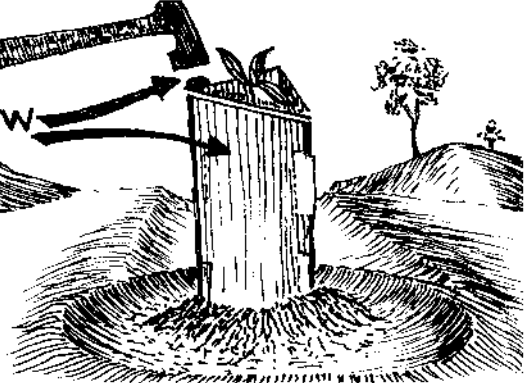
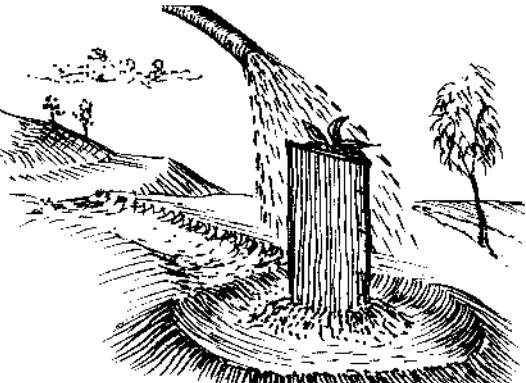
TREES	
<i>Allocasurina verticillata</i>	Drooping Sheoak
<i>Eucalyptus melliodora</i>	Yellow Box
<i>Eucalyptus obliqua</i>	Messmate
<i>Eucalyptus ovata</i>	Swamp Gum
<i>Eucalyptus viminalis</i>	Manna Gum
UNDERSTOREY TREE / LARGE SHRUB	
<i>Acacia mearnsii</i>	Black Wattle
<i>Bursaria spinosa var. spinosa</i>	Sweet Bursaria
MEDIUM SHRUBS	
<i>Acacia implexa</i>	Lightwood
<i>Acacia paradoxa</i>	Hedge Wattle
<i>Acacia pycnantha</i>	Golden Wattle
<i>Acacia rostrifomis</i>	BM Varnish Wattle
<i>Cassinia arcuata</i>	Drooping Cassinia
<i>Dodonaea viscosa subsp cuneata</i>	Wedge- Leaf hop-bush
<i>Melicytus dentatus</i>	Tree Violet
<i>Rhagodia parabolica</i>	Fragrant Saltbush

Species selection for the 2019 Community Planting Day has taken the following into consideration:

- Ecological Vegetation Classes (EVC’s) that would have once existed on site;
- Existing remnant vegetation at and adjoining the site;
- Our knowledge of which species have survived and performed well from previous plantings in the surrounding area;
- Physical characteristics of plant species and their ability to out compete noxious weeds and stabilise erosion prone soils;
- Ability of nurseries and suppliers to harvest local provenance seed and propagate seedlings; and
- Habitat characteristics of plant species (e.g. to enhance biodiversity and provide a suitable habitat for native fauna).

Grow West Community Planting Day

Tree Planting Guide

<p style="text-align: center;">1</p>  <p>Stamp with feet before digging hole to remove air pockets. Break clods with hammer.</p>	<p style="text-align: center;">2</p>  <p>Plant into rip lines, not on bank/mound, 3-4 metres apart and level to the prevailing ground.</p>
<p style="text-align: center;">3</p>  <p>Cover with 1-2 cm of friable soil from the hole. Break lumps/clods with suitable tool.</p>	<p style="text-align: center;">4</p>  <p>Make trough around plant to retain water.</p>
<p style="text-align: center;">5</p>  <p>Position tree-guard with stake edge facing into the prevailing wind. Hammer stake down to top of guard. Mound soil around base of tree-guard.</p>	<p style="text-align: center;">6</p>  <p>Water gently to avoid washing soil away from the plant.</p>

Illustrations by John Stirling

Frequently Asked Questions

When is the planting day?

Sunday 21st July 2019, 9.30am to 4pm.

How do I register?

Registration will be carried out online via www.growwest.com.au. If you do not have internet access or an email address you can contact Helena Lindorff on ph: 9971 6502 / 0437 195 511/ helena.lindorff@ppwcma.vic.gov.au for a registration form to be sent out. Alternatively, if you don't have internet access at home, you can either use the internet at your local library or contact the VNPA Office on 9347 5188.

What should I bring / wear?

Please bring along old clothes, boots and a spare change of clothes. The site if it is wet will be particularly muddy. It would be helpful to bring along gardening gloves. Make sure you clearly label your personal equipment.

Do I, along with other family or friends, need to register?

Every person who attends the planting day needs to be registered in order to cover public liability insurance requirements. Registration makes it possible for the organising committee to plan for catering, allocating number of volunteers to teams and organising tools and plants for the day.

Can children attend the day?

School aged children are most welcome to participate, however any person under the age of 18 is the responsibility of adults they attend with and needs to be supervised at all times. It is also important that children are supervised for their safety and during planting to ensure that the right planting technique is undertaken for optimum plant survival.

If I have registered but for some reason I am unable to attend on the day, should I notify the Project Coordinator?

It would be greatly appreciated if you notify Helena Lindorff, Planting Day Coordinator. Knowing numbers assists in planning appropriately for planting and if the event is booked out, your cancellation may make it possible for someone else to attend.

What about meals on the day?

Please indicate any dietary requirements when registering. To minimize waste, please bring your own water bottle, cup, plate and cutlery for lunch. Biscuits and fruit will be supplied for morning tea out on site, however if you wish to have a hot drink during the morning, please bring your own thermos, cup etc. Afternoon tea and a barbecue lunch will be provided by the Bacchus Marsh Lions Club.

Accommodation for the Saturday night?

There are a number of local motels, hotels, bed and breakfast, farm stays etc if you wish to stay the Saturday night. Please visit www.visitbacchusmarsh.com.au for further information.

How fit do I need to be?

A reasonable level of fitness will be necessary for you to be involved in the planting activities. Tasks include carrying plants, digging holes, planting trees and watering with buckets. Usually there is some walking to do depending on the nature of the

planting site. Jobs are allocated depending on an understanding of your fitness or physical capabilities. There are also important jobs that don't require much walking or physical activity, such as making up tree guards.

What about my safety?

A thorough safety audit is prepared for the day. There will also be qualified first aid support at all times. All participants will also need to practise due care and take responsibility for their own safety. Don't forget to bring adequate sun protection, sturdy footwear and warm clothing.

Will there be public liability insurance cover?

Yes, the organising committee arranges normal public liability insurance for the day.

What will the weather be like?

Being mid winter and the nature of the site, it is likely to be cold and maybe windy. We advise that you come prepared for all weather conditions, but highly recommend you bring along warm clothing. Visit www.bom.gov.au for more information about the weather forecast for the area.

Is the project environmentally friendly?

Planting trees couldn't be any more environmentally responsible. We also ask you to bring your own water bottle, cutlery, plates, bowls and mugs to save on using throwaways. Even the food is sourced locally wherever possible.

Am I allowed to bring my dog to the planting day?

For the comfort and safety of all participants, dogs are not permitted at the planting day.

Lost property?

On occasions, personal items of clothing, drink bottles or planting equipment are left behind after the planting day. We will endeavour to return property but please ensure that you clearly identify all your personal items.

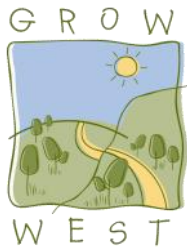
How will the day be organised?

You will be allocated to a small team of about 20 people who will work together under the guidance of a team leader. The team leader will demonstrate the method of planting to be used on this site. Members of the team may be asked to help with tasks such as delivering and laying out of plants and tree guards in your nominated planting zone, assembling tree guards, planting in rip lines, installing tree guards, watering plants, quality control inspections and gathering of tools, spare plants and tree guards at the end of the day. Team members should be prepared to swap jobs and respond to team leader's requests during the day.

Who do I contact if I need answers to information not covered above?

You can contact Helena Lindorff, Grow West Planting Day Coordinator on ph: 9971 6502/ 0437 195 511 helena.lindorff@ppwcma.vic.gov.au

Supporters of the event:



This annual event is run in partnership with Port Phillip and Westernport CMA - Grow West Project, Victorian National Park Association, Friends of Werribee Gorge and Long Forest Mallee, Bacchus Marsh Lions Club, Victorian Mobile Landcare Group, 15 Trees, G.J Gardner Homes, Bendigo Bank Bacchus Marsh, Western Water, Melbourne Water Stream Frontage Program.

The event has been funded through the Greening the West – 1 Million Tree program which is supported by the Australian Government's 20 Million Trees Program (part of the National Landcare Program).