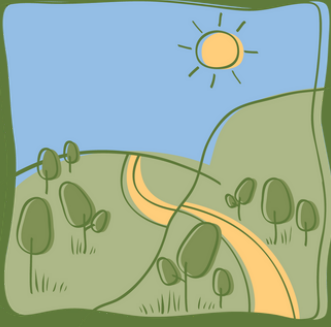


G R O W



W E S T

GROW WEST

2016-17 SNAPSHOT

Landscape rehabilitation on a grand scale

For more than 13 years, Grow West has worked to improve degraded landscapes around Bacchus Marsh, west of Melbourne. Its vision is to rejuvenate up to 10,000 hectares and develop vegetation connections across the landscapes between the Brisbane Ranges National Park, Werribee Gorge State Park and Lerderderg State Park.

Grow West works with a range of landholders on revegetation projects of all sizes. Over 2500 hectares in total has been revegetated, enhancing biodiversity, reducing the spread of noxious weeds and pest animals, reducing erosion and improving landholder skills and participation.

Grow West brings together planners and practitioners from a range of organisations and community groups including:

- Moorabool Shire Council
- Melbourne Water
- Southern Rural Water
- Parks Victoria
- Department of the Environment, Land, Water and Planning
- Conservation Volunteers Australia
- Moorabool Landcare Network.

The Port Phillip & Westernport CMA (PPWCMA) coordinates Grow West on behalf of these partner organisations.



2016-17 highlights



Over 2500 hectares revegetated over Grow West's 13 years of operation



7 organisations & 5 community members an active part of the Grow West Implementation Committee



Contracts established with 48 landholders to plant 388,862 trees

Achievements in 2016-17

In 2016-17, Grow West secured a share of \$3.63 million from Lead West to assist in the delivery of the Australian Government's 'Greening the West – 1 Million Trees' project. The PPWCMA, through the Grow West and Greening the Maribyrnong projects, will deliver 716,470 trees in the Upper Werribee and Maribyrnong Catchments.

The implementation of this project in the Grow West area led to contracts with 48 landholders to plant 388,862 trees.

Grow West's partner organisations, including Moorabool Shire Council, Melbourne Water and Southern Rural Water, contributed \$50,000 in 2016-17 to support the ongoing planning and coordination of Grow West.

2016 Grow West Community Planting Day

Grow West headed to Melton for its 11th annual Community Planting Day. Grow West partnered with Western Water to hold the event at the Melton Recycled Water Plant, Surbiton Park. The 694 hectare site was chosen as it's home to two areas of environmental significance - Pinkerton Forest and Werribee River Volcanic Gorge.

With the help of Pinkerton Landcare and Environment Group and Melbourne Water, both who are involved in restoration works on the site, 130 volunteers spent the day planting 3000 trees adjacent to the Werribee River.

The Grow West Community Planting Day continues to build on its success every year, providing the community with a unique opportunity to make substantial, wide-ranging improvements to the liveability and sustainability of the west. Future works are planned, with the creation of further habitat corridors to connect Pinkerton Forest and nearby Bush's Paddock underway.



130 community members planted 3000 trees at Surbiton Park in Melton



Funds secured to assist with the delivery of the 'Greening the West – 1 Million Trees' project



\$50,000 in partner contributions supporting ongoing planning and coordination

Looking forward

In 2017-18, the 48 contracted landholder will begin planting their trees for the 'Greening the West – 1 Million Trees' project.

Grow West will continued its engagement with the wider community through the 2017 Grow West Community Planting Day in July. The event continues to grow and attract new community members and it is anticipated that this level of engagement will continue.



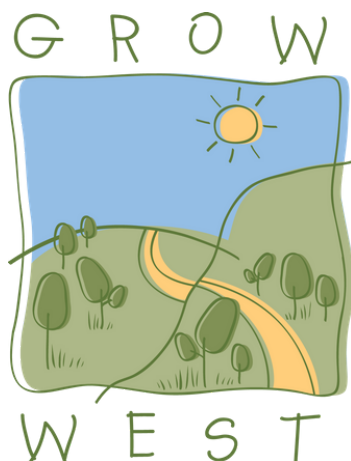
For more information on Grow West:

Helena Lindorff
Grow West Program Coordinator

Phone: 03 9971 6502

Email: helena.lindorff@ppwcma.vic.gov.au

www.growwest.com.au



National
Landcare
Program

