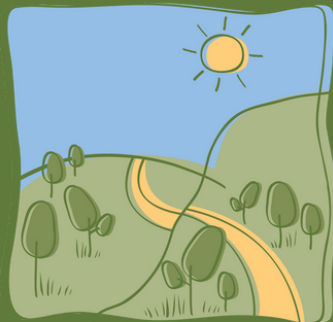


G R O W



W E S T

2017-18 SNAPSHOT

Image: Aerial view of the Grow West Community Planting Day 2017 in Telford Park, Darley. Image courtesy of Moorabool Shire Council.

www.growwest.com.au

Landscape rehabilitation on a grand scale

Since 2004, Grow West has worked to improve degraded landscapes around Bacchus Marsh, in Melbourne's west. Its vision is to rejuvenate up to 10,000 hectares and develop vegetation connections across landscapes between the Brisbane Ranges National Park, Werribee Gorge State Park and Lerderderg State Park.

Grow West works with a range of landholders on revegetation projects of all sizes. Over 2500 hectares in total has been revegetated, enhancing biodiversity, reducing the spread of noxious weeds and pest animals, reducing erosion and improving landholder skills and participation.

The success of the project is due to the strong collaboration between the organisations and community, including:

- Moorabool Shire Council
- Melbourne Water
- Southern Rural Water
- Parks Victoria
- Department of the Environment, Land, Water and Planning
- Conservation Volunteers Australia
- Moorabool Landcare Network.

The Port Phillip & Westernport CMA (PPWCMA) coordinates Grow West on behalf of these partner organisations.



2017-18 highlights



Over 2500 hectares revegetated over Grow West's 14 years of operation



7 organisations & 5 community members an active part of the Grow West Implementation Committee



388,862 trees planted by 48 landholders through Greening the West - 1 Million Trees

Achievements in 2017-18

Throughout 2017-18, Grow West delivered on-ground works and coordination for a range of projects. \$240,000 was received from the Victorian Government's Biodiversity On Ground Hubs for the 'Protecting and Connecting Species and Communities in Melbourne's West'. The Grow West portion of the Greening the West – 1 Million Trees project saw 48 landholders plant 388,862 trees.

Grow West again supported the Bacchus Marsh Rotary Community Art Show, awarding a \$500 prize to photographer Burnie McRitchie for his interpretation of the Grow West landscape. His work titled Four Boobook Owls shows the curious eyes of local barking owls nesting in a tree along the Werribee River.

Grow West's partner organisations, including Moorabool Shire Council, Melbourne Water and Southern Rural Water, contributed \$50,000 in 2017-18 to support the ongoing planning and coordination of Grow West.

2017 Grow West Community Planting Day

Grow West partnered with Moorabool Shire Council to host its 12th annual Community Planting Day at Telford Park in Darley, Bacchus Marsh. The 16 hectare park named after its last private land owner, William Telford, was a landfill site during the mid-20th century.

While some revegetation has occurred since then, more native vegetation is required to prevent erosion affecting local waterways and to help the site become a refuge for native fauna. 6000 trees were planted on the day and another 1000 were planted by school students the week after.

The Grow West Community Planting Day continues to build on its success every year, providing the community with a unique opportunity to make substantial, wide-ranging improvements to the liveability and sustainability of the west.



200 community members planted 3000 trees at Surbiton Park in Melton



\$240,000 received from the Victorian Government for the Protect and Connect Melbourne's West project.



\$50,000 in partner contributions supporting ongoing planning and coordination

Looking forward

2018-19 is Grow West's 15th year of operation and the project will acknowledge the work done by its landholders, contractors and supporters at a celebratory event. The Grow West Coordination Committee will also use the 15 year milestone as an opportunity to focus on increasing awareness of Grow West within the region by increasing online promotion, exploring public display opportunities and sharing landholders stories.

Grow West will continue its 'Protecting and Connecting Species and Communities in Melbourne's West' project with Trust for Nature and Parks Victoria and will start a new 'Peaks to Plains' project with Parks Victoria and Greater Geelong City Council, working on the around You Yangs.



Before (1970). Looking over Yaloak to Cut Hill.



After (2018). Result of Grow West and partner revegetation works.

For more information on Grow West:

Emma Muir

Grow West Program Coordinator

Phone: 03 9971 6502 | Email: emma.muire@ppwcma.vic.gov.au

www.growwest.com.au

