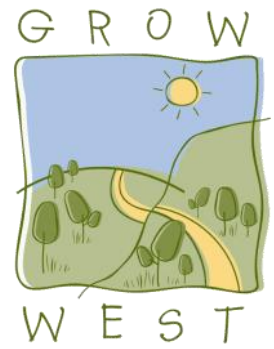


Volunteer Information Pack

**Grow West Community Planting Day
Sunday 16th July 2017**



When: Sunday 16th July 2017, 9:30am – 4pm

What: You will join a volunteer force to plant seedlings, make up and install tree guards and then join us for lunch.

Where: Telford Park 88 Wittick St, Darley, VIC 3340 (Melways Page 327 F12).

Bring: Warm clothes, hat, gloves and sturdy footwear. To minimize waste, please bring your own water bottle, cup, plate and cutlery for lunch. Lunch & afternoon tea will be supplied.

Contact: Emma Muir on ph: 5368 7256 / 0412 685 404 / peteremma15@bigpond.com

Register online at www.growwest.com.au. Closes 10th July 2017

This annual event is run in partnership with Port Phillip and Westernport CMA - Grow West Project, Victorian National Park Association, Friends of Werribee Gorge and Long Forest Mallee, Bacchus Marsh Lions Club, Victorian Mobile Landcare Group and hosted by the Moorabool Shire Council

The event has been funded through the Greening the West – 1 Million Tree program which is supported by the Australian Government’s 20 Million Trees Programme (part of the National Landcare Programme).

**Help us plant 7,000 trees
for a better, greener
future.**

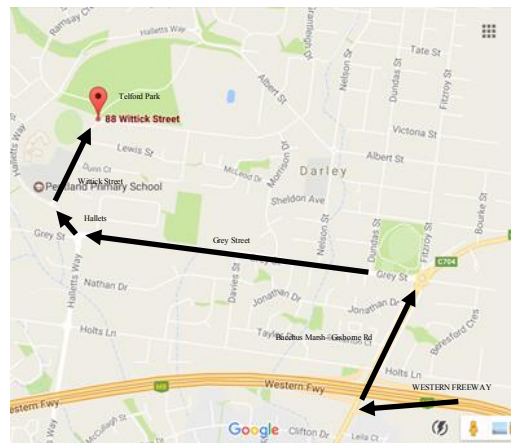
Event Schedule

8.30am	Team leaders briefing
9.30am	Registrations Open
9.30–11 am	Volunteers allocated into teams Tree Planting
11am	Morning tea supplied at registration
11.15am – 12.30pm	Continue planting
12.30 - 1.30pm	BBQ lunch
1pm	Official welcome & thank you / Large group photo
1.30pm – 3.45pm	Assemble back into planting teams – continue planting
3.45pm–4pm	Afternoon tea back at catering tent / conclusion of event

Directions to planting day site

Telford Park, 88 Wittick St, Darley VIC 3340 (Melway Page 327 F12).

1. Head onto the **Western Highway**
 2. At Bacchus Marsh take the **Gisborne Exit** off the highway
 3. Turn right into **Bacchus Marsh –Gisborne Road.**
 4. At roundabout turn left on to **Grey St**
 5. At roundabout turn right onto **Halletts Way**
 6. At roundabout turn right onto **Wittick St** continue 450m turn right into Parking
- Please refer to the Melway or Google Maps if you wish to take an alternate route.



Supporters of the event:



Telford Park

Grow West to plant 7000 trees on historic site

Local green thumbs can roll up their sleeves and help plant 7000 new trees at Telford Park in Darley at the 12th annual Grow West Community Planting Day on Sunday 16th July.

The annual planting day is one of the Grow West's biggest events and is an important opportunity to rejuvenate and restore local landscapes. Over the past 13 years, Grow West has worked with thousands of volunteers and hundreds of landholders, who have helped plant over a million trees in the Upper Werribee Catchment.

This year, Moorabool Shire Council will be hosting the event at one of their reserves, Telford Park which is located next to the council offices in Darley, Bacchus Marsh.

Telford Park is a 16 hectare park that is named after its last private land owner, William Telford, who died in 1928. It was a landfill site during the mid-20th century and Moorabool Shire Council's Environment Officer Tom Miller says that the park is currently degraded and underutilised.

"While some revegetation has occurred, more native vegetation is required to prevent erosion affecting local waterways and to help the site become a refuge for native fauna."

"With a bit of work from some dedicated volunteers, this park has the potential to be a significant community asset and improve the health of the local environment".

Port Phillip and Westernport CMA Environmental Projects Coordinator, Helena Lindorff said, "We've been working with the Council for many years now on their environmental reserves. It's very exciting that we have the opportunity to run our annual community planting day at the reserve, where local residents will have a direct benefit, once this area has been revegetated."

"We are so fortunate that we have many organisations and local groups that volunteer their time to help out with the annual event;

Victorian National Park Association, Friends of Werribee Gorge and Long Forest Mallee, Bacchus Marsh Lions Club, Victorian Mobile Landcare Group and the new addition this year are the Bacchus Marsh Scouts and Girl Guides.

The event has been funded through the Greening the West – 1 Million Tree program which is supported by the Australian Government's 20 Million Trees Programme (part of the National Landcare Programme). The project creates a unique opportunity to make substantial, wide ranging improvements to the liveability and sustainability of the west.



TREES

Allocasuarina verticillata Drooping Sheoak

Eucalyptus microcarpa Grey Box

Eucalyptus polyanthemos Red Box

UNDERSTOREY TREE / LARGE SHRUB

Acacia mearnsii Black Wattle

Bursaria spinose var. spinosa Sweet Bursaria

MEDIUM SHRUBS

Acacia implexa Lightwood

Acacia paradoxa Hedge Wattle

Acacia verniciflua Varnish Wattle

Acacia pycnantha Golden Wattle

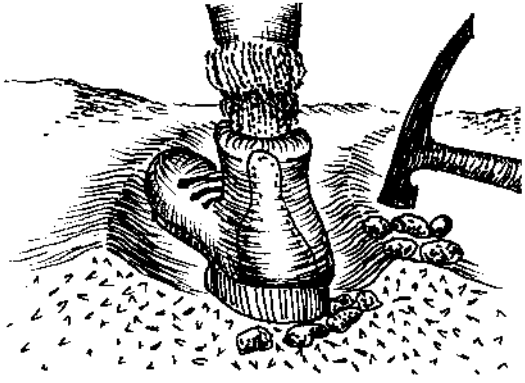
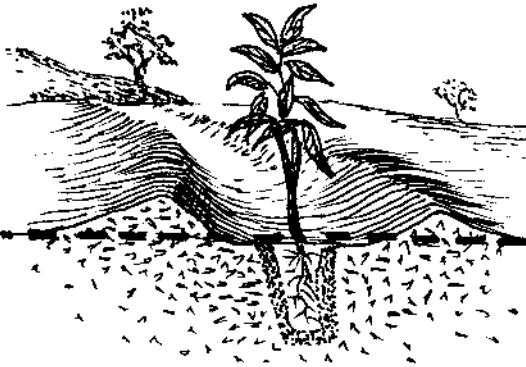
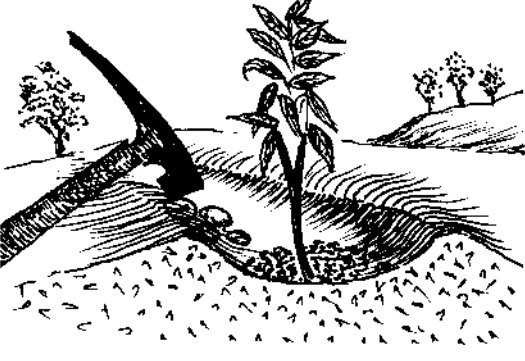
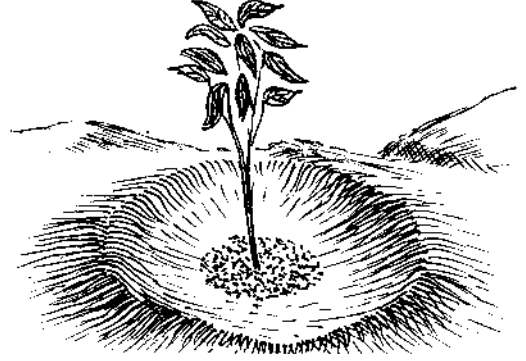
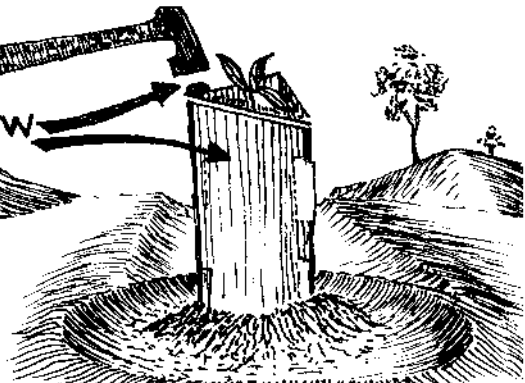
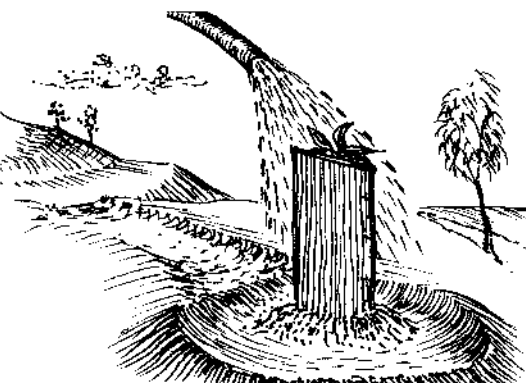
Rhagodia parabolica Fragrant Saltbush

Species selection for the 2017 Community Planting Day has taken the following into consideration:

- Ecological Vegetation Classes (EVC's) that would have once existed on site;
- Existing remnant vegetation at and adjoining the site;
- Our knowledge of which species have survived and performed well from previous plantings in the surrounding area;
- Physical characteristics of plant species and their ability to out compete noxious weeds and stabilise erosion prone soils;
- Ability of nurseries and suppliers to harvest local provenance seed and propagate seedlings; and
- Habitat characteristics of plant species (e.g. to enhance biodiversity and provide a suitable habitat for native fauna).

Grow West Community Planting Day

Tree Planting Guide

<p style="text-align: center;">1</p>  <p>Stamp with feet before digging hole to remove air pockets. Break clods with hammer.</p>	<p style="text-align: center;">2</p>  <p>Plant into rip lines, not on bank/mound, 3-4 metres apart and level to the prevailing ground.</p>
<p style="text-align: center;">3</p>  <p>Cover with 1-2 cm of friable soil from the hole. Break lumps/clods with suitable tool.</p>	<p style="text-align: center;">4</p>  <p>Make trough around plant to retain water.</p>
<p style="text-align: center;">5</p>  <p>Position tree-guard with stake edge facing into the prevailing wind. Hammer stake down to top of guard. Mound soil around base of tree-guard.</p>	<p style="text-align: center;">6</p>  <p>Water gently to avoid washing soil away from the plant.</p>

Frequently Asked Questions

When is the planting day?

Sunday 16th July 2017, 9.30am to 4pm.

How do I register?

Registration will be carried out online via www.growwest.com.au. If you do not have internet access or an email address you can contact Emma Muir on ph: 5368 7256 / 0412 685 404 / peteremma15@bigpond.com for a registration form to be sent out. Alternatively, if you don't have internet access at home, you can either use the internet at your local library or contact the VNPA Office on 9347 5188.

What should I bring / wear?

Please bring along old clothes, boots and a spare change of clothes. The site if it is wet will be particularly muddy. It would be helpful to bring along gardening gloves. Make sure you clearly label your personal equipment.

Do I, along with other family or friends, need to register?

Every person who attends the planting day needs to be registered in order to cover public liability insurance requirements. Registration makes it possible for the organising committee to plan for catering, allocating number of volunteers to teams and organising tools and plants for the day.

Can children attend the day?

School aged children are most welcome to participate, however any person under the age of 18 is the responsibility of adults they attend with and needs to be supervised at all times. It is also important that children are supervised for their safety and during planting to ensure that the right planting technique is undertaken for optimum plant survival.

If I have registered but for some reason I am unable to attend on the day, should I notify the Project Coordinator?

It would be greatly appreciated if you notify Emma Muir, Planting Day Coordinator. Knowing numbers assists in planning appropriately for planting and if the event is booked out, your cancellation may make it possible for someone else to attend.

What about meals on the day?

Please indicate any dietary requirements when registering. To minimize waste, please bring your own water bottle, cup, plate and cutlery for lunch. Biscuits and fruit will be supplied for morning tea out on site, however if you wish to have a hot drink during the morning, please bring your own thermos, cup etc. Afternoon tea and a barbecue lunch will be provided by the Bacchus Marsh Lions Club.

Accommodation for the Thursday night?

There are a number of local motels, hotels, bed and breakfast, farm stays etc if you wish to stay the Saturday night. Please visit www.visitbacchusmarsch.com.au for further information.

How fit do I need to be?

A reasonable level of fitness will be necessary for you to be involved in the planting activities. Tasks include carting plants, digging holes, planting trees and watering with buckets. Usually there is some walking to do depending on the nature of the

planting site. Jobs are allocated depending on an understanding of your fitness or physical capabilities. There are also important jobs that don't require much walking or physical activity, such as making up tree guards.

What about my safety?

A thorough safety audit is prepared for the day. There will also be qualified first aid support at all times. All participants will also need to practise due care and take responsibility for their own safety. Don't forget to bring adequate sun protection, sturdy footwear and warm clothing.

Will there be public liability insurance cover?

Yes, the organising committee arranges normal public liability insurance for the day.

What will the weather be like?

Being mid winter and the nature of the site, it is likely to be cold and maybe windy. We advise that you come prepared for all weather conditions, but highly recommend you bring along warm clothing. Visit www.bom.gov.au for more information about the weather forecast for the area.

Is the project environmentally friendly?

Planting trees couldn't be any more environmentally responsible. We also ask you to bring your own water bottle, cutlery, plates, bowls and mugs to save on using throwaways. Even the food is sourced locally wherever possible.

Am I allowed to bring my dog to the planting day?

For the comfort and safety of all participants, dogs are not permitted at the planting day.

Lost property?

On occasions, personal items of clothing, drink bottles or planting equipment are left behind after the planting day. We will endeavour to return property but please ensure that you clearly identify all your personal items.

How will the day be organised?

You will be allocated to a small team of about 20 people who will work together under the guidance of a team leader. The team leader will demonstrate the method of planting to be used on this site. Members of the team may be asked to help with tasks such as delivering and laying out of plants and tree guards in your nominated planting zone, assembling tree guards, planting in rip lines, installing tree guards, watering plants, quality control inspections and gathering of tools, spare plants and tree guards at the end of the day. Team members should be prepared to swap jobs and respond to team leader's requests during the day.

Who do I contact if I need answers to information not covered above?

You can contact Emma Muir, Grow West Planting Day Coordinator Emma Muir on ph: 5368 7256 / 0412 685 404 / peteremma15@bigpond.com